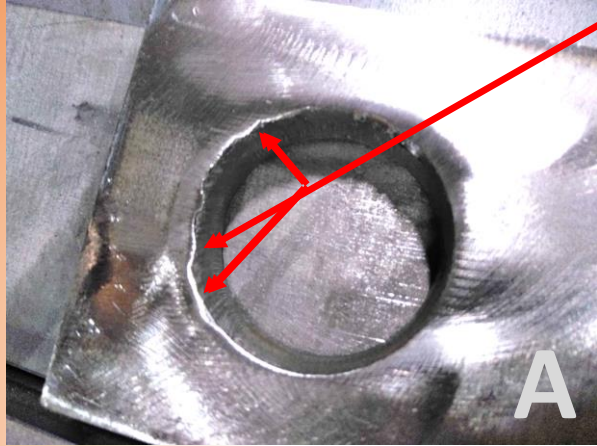


Unacceptable reworked parts examples.



Picture **A** has been reworked for laser slag but an issue still exists within the hole where there is still material protruding into the ID, causing it to be out of hole diameter tolerance.



Pictures **B** and **C** have been reworked for surface scratches with a powered grinder and in this case caused deep grinder marks in the surface of the part that are visible after paint at the customer.



GAD-VA-011 Rework Visual
Aid 5.7.20 Rev 0

Acceptable reworked parts examples.



Picture **1** has been properly reworked with a powered grinder and has clean uniform edge around the diameter of the hole. Picture **2** also has clean reworked edges where laser slag was present.



Picture **3** had surface scratches and was reworked using an Orbital/DA sander that is not as abrasive or aggressive as a powered grinder. It was also evenly reworked across the surface to prevent any visual defect after painting.

